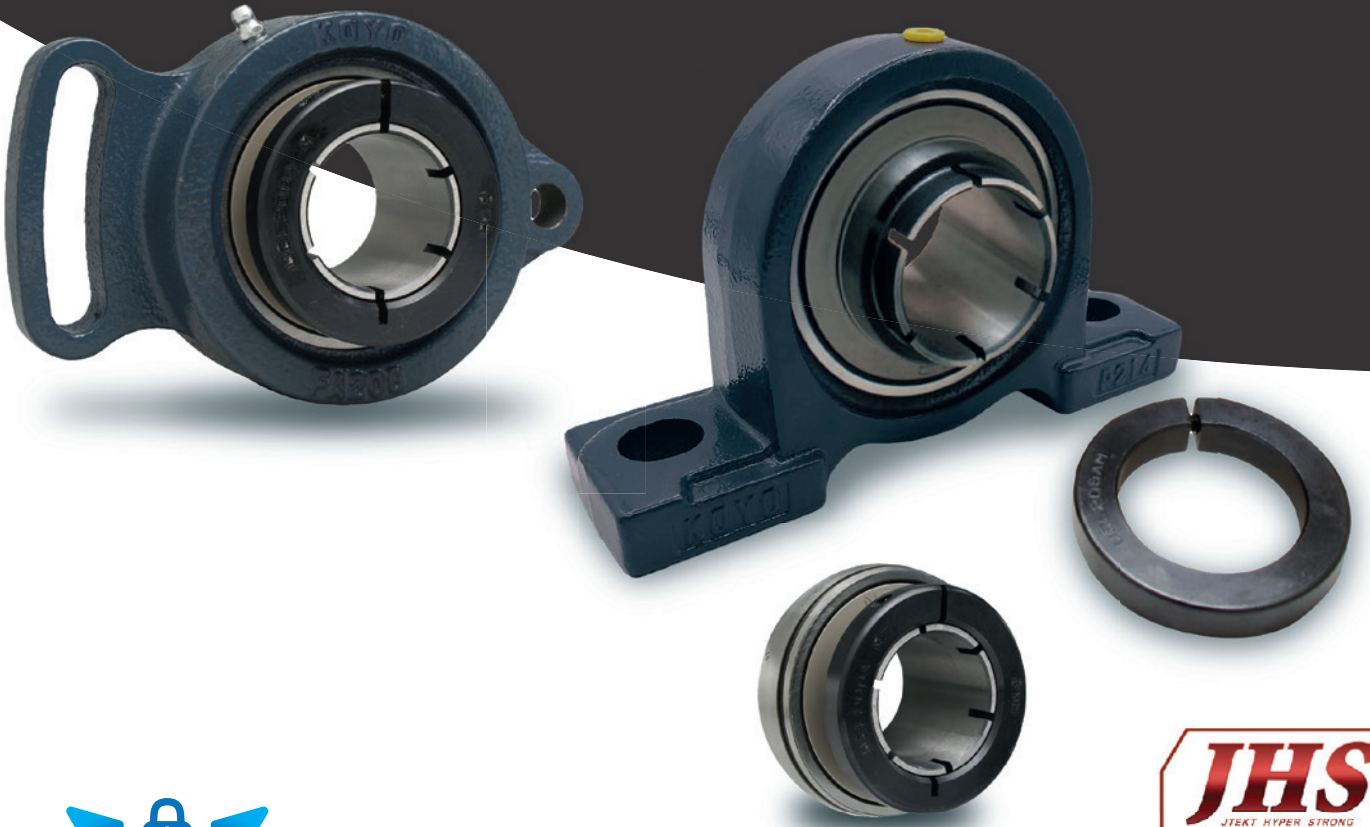


YENI

JTEKT



JHS
JTEKT HYPER STRONG



EasyFit NC Yataklı Rulmanlar

360° Kelepçeleme

Formerly sold as

Koyo

JTEKT | JTEKT CORPORATION

EasyFit NC Yataklı Rulmanlar

3 Önemli Avantaj

Kolay Montaj

360° Kelepçeleme

Daha uzun rulman ömrü

Giriş

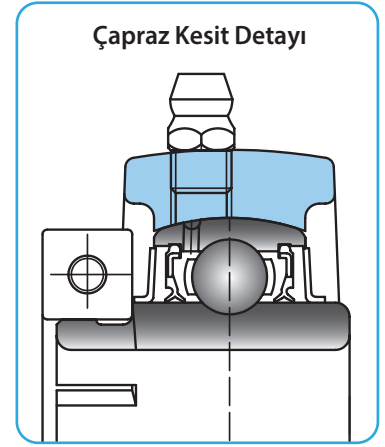
Yeni EasyFit NC Yataklı Rulmanlarımızın (BBU'lar) piyasaya sürülmesiyle, müşterilerimizin kurulumu iyileştirme ve kısaltma ihtiyaçlarını karşılamayı başardık. EasyFit NC BBU'lar, kolay kurulumun yanında daha uzun kullanım ömrü ve geliştirilmiş 360° kelepçeleme imkanı sunuyor.

Standart altı köşe başlı vida

Konsantrik sıkma bileziği



Çapraz Kesit Detayı



3 Önemli Avantaj

1. Kolay montaj

Koyo'nun EasyFit NC BBU'larıyla, şaft daha kolay ve hızlı bir şekilde monte edilebilir. Standart altı köşe başlı vidayı konsantrik sıkma bileziğine sıkıştırarak rulman iç halkasının şaftta 360° çevresel sabitlemesi sağlanır.

2. 360° kelepçeleme

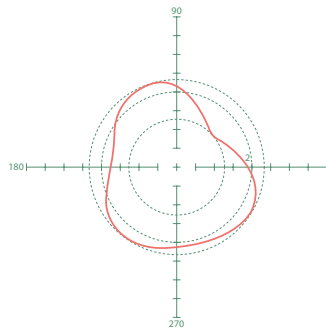
360° kelepçeleme sistemi, şaft üzerinde hasar ve iz oluşmasını önler. Aynı zamanda, yataklı rulman çalışma yüzeylerinin deformasyonunu sınırlayarak standart tespit vidası sistemlerine kıyasla, yüksek hızlarda daha az titreşim ve daha sessiz çalışma sağlar.

3. Daha uzun rulman ömrü

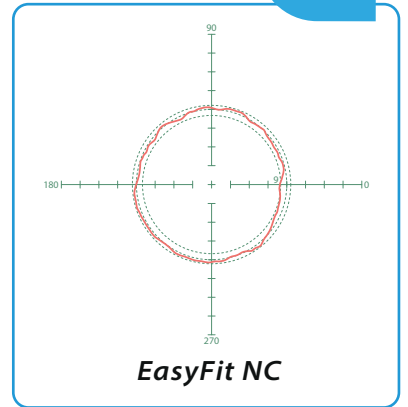
Yatak çalışma yüzeyinin optimize edilmiş yuvarlaklığı, daha düzgün çalışma sağlar ve rulman aşınmasını önleyerek rulman ömrünün artmasına katkıda bulunur.

Yatak Çalışma Yüzeyinin Yuvarlaklığı

İyileştirilmiş versiyon



120° TESPİT VİDASI



EasyFit NC

Not: Önerilen sıkıştırma torku, teknik özellik tablolarının en altında belirtilmiştir

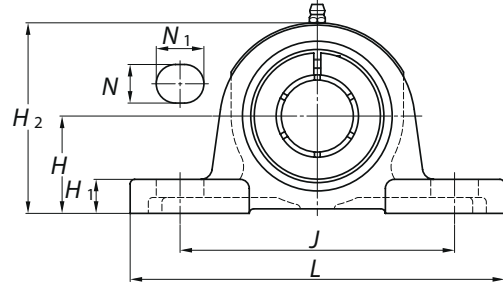
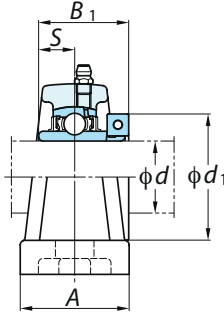
Yastık tipi üniteler, EasyFit NC Serisi

NCP

Silindir delik (konsantrik sıkma bileziği ile)

iç çap 20 ~ 60 mm

JTEKT



Mil Çapı mm	inç	Ölçüler inç										Cıvata Ölçüsü	Ünite No.	Yatak No.	Rulman No.	Ağırlık kg													
		H	L	A	J	N	N ₁	H ₁	H ₂	B ₁	S						d ₁												
20	3/4	1 5/16	5	1 1/2	3 3/4	1/2	23/32	1/2	2 17/32	1 9/32	1/2	1 3/4	3/8	NCP204-12 NCP204	P204	NC204-12 NC204	0.80												
		33.3	127	38	95	13	18	16	65	32.5	12.7	44.5	M10																
25	7/8	1 7/16	5 1/2	1 1/2	4 1/8	1/2	23/32	1/2	2 25/32	1 7/16	9/16	1 15/16	3/8	NCP205-14 NCP205-15 NCP205 NCP205-16	P205	NC205-14 NC205-15 NC205 NC205-16	1.0												
	15/16																	36.5	140	38	105	13	18	13	70	36.5	14.3	49.2	M10
	1																												
30	1 1/8	1 11/16	6 1/2	1 7/8	4 3/4	21/32	13/16	19/32	3 5/16	1 9/16	5/8	2 3/16	1/2	NCP206-18 NCP206 NCP206-19 NCP206-20	P206	NC206-18 NC206 NC206-19 NC206-20	1.5												
	1 3/16																	42.9	165	48	121	17	21	17	84	39.7	15.9	55.6	M14
	1 1/4																												
35	1 1/4	1 7/8	6 9/16	1 7/8	5	21/32	13/16	5/8	3 21/32	1 3/4	11/16	2 7/16	1/2	NCP207-20 NCP207 NCP207-22 NCP207-23	P207	NC207-20 NC207-22 NC207 NC207-23	1.9												
	1 3/8																	47.6	167	48	127	17	21	18	95	44.5	17.5	61.9	M14
	1 7/16																												
40	1 1/2	1 15/16	7 1/4	2 1/8	5 13/32	21/32	13/16	21/32	3 27/32	2	3/4	2 11/16	1/2	NCP208-24 NCP208	P208	NC208-24 NC208	2.4												
																		49.2	184	54	137	17	21	18	98	50.8	19	68.3	M14
45	1 5/8	2 1/8	7 15/32	2 1/8	5 3/4	21/32	13/16	21/32	4 3/16	2	3/4	2 13/16	1/2	NCP209-26 NCP209-27 NCP209-28 NCP209	P209	NC209-26 NC209-27 NC209-28 NC209	2.6												
																		54	190	54	146	17	21	20	106	50.8	19	71.4	M14
	1 11/16																												
50	1 15/16	2 1/4	8 1/8	2 3/8	6 1/4	25/32	7/8	3/4	4 7/16	2 3/32	3/4	3 3/8	5/8	NCP210-31 NCP210 NCP210-32	P210	NC210-31 NC210 NC210-32	3.5												
																		57.2	206	60	159	20	22	21	113	53.1	19	85.7	M16
	2																												
55	2	2 1/2	8 5/8	2 3/8	6 23/32	25/32	7/8	3/4	4 29/32	2 1/4	7/8	3 1/2	5/8	NCP211-32 NCP211 NCP211-35	P211	NC211-32 NC211 NC211-35	4.0												
																		63.5	219	60	171	20	22	23	125	57.1	22.2	88.9	M16
	2 3/16																												
60	2 1/4	2 3/4	9 1/2	2 3/4	7 1/4	25/32	31/32	7/8	5 7/16	2 5/8	1	4 1/16	5/8	NCP212-36 NCP212 NCP212-39	P212	NC212-36 NC212 NC212-39	5.6												
																		69.8	241	70	184	20	25	25	138	66.7	25.4	103.2	M16
	2 7/16																												

Başlı Vida Sıkıştırma Torku (önerilen)

Delik çapı	Başlı Vida büyüklüğü	Önerilen N-m	Maks. N-m
20 - 30 mm	M4 x0,7 or No.8-32UNC	4,2 - 4,6	4,9
35 - 45 mm	M5x0,8 or No.10-24UNC	8,8 - 9,8	10
50 - 55 mm	M6 x1 or 1/4-20UNC	15,2 - 16,8	17
60 mm	M8x1,25 or 5/16-18UNC	38 - 42	44

Not

- Daha fazla teknik bilgi için BS006EN-ODS sayılı genel BBU kataloğumuza bakın.
- NC serisi için çelik ve dökme demir kapaklar mevcuttur.
- Özel gres dolumu sadece talep üzerine yapılır.

Formerly sold as

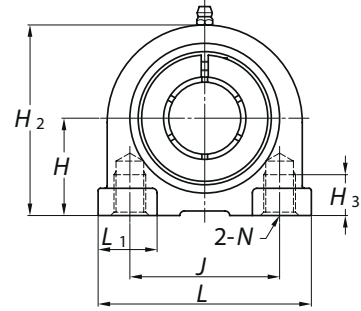
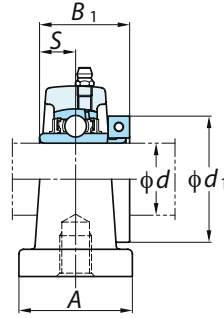
Koyo

Dişli tabanlı yastık tipi üniteler, EasyFit NC Serisi

NCPA

Silindir delik (konsantrik sıkma bileziği ile)

İç çap 20 ~ 50 mm



Mil Çapı mm	inç	Ölçüler inç											Ünite No.	Yatak No.	Rulman No.	Ağırlık kg
		H	L	A	J	N	H ₂	H ₃	L ₁	B ₁	S	d ₁				
20	3/4	1 3/16	3	1 9/16	2 3/64	M10x1.5	2 3/8	1/2	1 1/16	1 9/32	0 1/2	1 3/4	NCPA204-12 NCPA204	PA204	NC204-12 NC204	0.73
		30.2	76	40	52		60	13	27	32.5	12.7	44.5				
25	7/8	1 7/16	3 5/16	1 25/32	2 13/64	M10x1.5	2 25/32	1/2	1 3/16	1 7/16	0 9/16	1 15/16	NCPA205-14 NCPA205-15 NCPA205 NCPA205-16	PA205	NC205-14 NC205-15 NC205 NC205-16	1.0
	15/16	36.5	84	45	56		71	13	30	36.5	14.3	49.2				
	1															
30	1 1/8	1 11/16	3 11/16	1 31/32	2 19/32	M14x2	3 5/16	23/32	1 13/32	1 9/16	0 5/8	2 3/16	NCPA206-18 NCPA206 NCPA206-19 NCPA206-20	PA206	NC206-18 NC206 NC206-19 NC206-20	1.4
	1 3/16	42.9	94	50	66		84	18	36	39.7	15.9	55.6				
	1 1/4															
35	1 1/4	1 7/8	3 11/32	2 5/32	3 5/32	M14x2	3 21/32	25/32	1 5/8	1 3/4	0 11/16	2 7/16	NCPA207-20 NCPA207-22 NCPA207 NCPA207-23	PA207	NC207-20 NC207-22 NC207 NC207-23	2.0
	1 3/8	47.6	110	55	80		93	20	41	44.5	17.5	61.9				
	1 7/16															
40	1 1/2	1 15/16	4 9/16	2 9/32	3 5/16	M14x2	3 27/32	25/32	1 5/8	2	0 3/4	2 11/16	NCPA208-24 NCPA208	PA208	NC208-24 NC208	2.4
		49.2	116	58	84		98	20	41	50.8	19	68.3				
45	1 5/8	2 9/64	4 23/32	2 3/8	3 35/64	M14x2	4 3/16	31/32	1 21/32	2	0 3/4	2 13/16	NCPA209-26 NCPA209-27 NCPA209-28 NCPA209	PA209	NC209-26 NC209-27 NC209-28 NC209	2.6
	1 11/16	54.2	120	60	90		106	25	42	50.8	19	71.4				
	1 3/4															
50	1 15/16	2 1/4	5 1/8	2 17/32	3 45/64	M16x2	4 7/16	31/32	1 27/32	2 3/32	0 3/4	3 3/8	NCPA210-31 NCPA210 NCPA210-32	PA210	NC210-31 NC210 NC210-32	3.4
	2	57.2	130	64	94		113	25	47	53.1	19	85.7				

Başlı Vida Sıkıştırma Torku (önerilen)

Delik çapı	Başlı Vida büyüklüğü	Önerilen N-m	Maks. N-m
20 - 30 mm	M4 x0,7 or No.8-32UNC	4,2 - 4,6	4,9
35 - 45 mm	M5x0,8 or No.10-24UNC	8,8 - 9,8	10
50 - 55 mm	M6 x1 or 1/4-20UNC	15,2 - 16,8	17
60 mm	M8x1,25 or 5/16-18UNC	38 - 42	44

Not

- Daha fazla teknik bilgi için BS006EN-ODS sayılı genel BBU kataloğumuza bakın.
- NC serisi için çelik ve dökme demir kapaklar mevcuttur.
- Özel gres dolumu sadece talep üzerine yapılır.

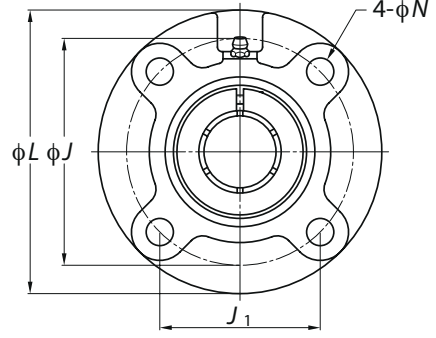
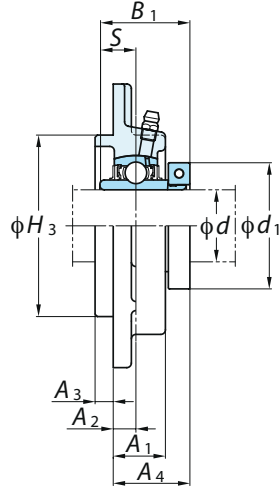
Formerly sold as

Koyo

Yuvarlak flanşlı kartuş tipi üniteler, EasyFit NC Serisi NCFC



Silindirik delik (konsantrik sıkma bileziği ile)
iç çap 20 ~ 60 mm



Mil Çapı mm inç	Ölçüler inç mm												Cıvata Ölçüsü inç mm	Ünite No.	Yatak No.	Rulman No.	Ağırlık kg	
	L	H ₃	J	J ₁	N	A ₁	A ₂	A ₃	A ₄	B ₁	S	d ₁						
20	3/4	3 15/16	2 7/16	3 5/64	2 11/64	15/32	13/16	25/64	13/64	1 3/16	1 9/32	0 1/2	1 3/4	3/8	NCFC204-12 NCFC204	FC204	NC204-12 NC204	0.87
	100	62	78	55.1	12	20.5	10	5	29.8	32.5	12.7	44.5	M10					
25	7/8	4 17/32	2 3/4	3 35/64	2 1/2	15/32	13/16	25/64	15/64	1 9/32	1 7/16	0 9/16	1 15/16	3/8	NCFC205-14 NCFC205-15 NCFC205	FC205	NC205-14 NC205-15 NC205	1.2
	115	70	90	63.6	12	21	10	6	32.2	36.5	14.3	49.2	M10					
30	1 1/8	4 29/32	3 5/32	3 15/16	2 25/32	15/32	29/32	25/64	5/16	1 11/32	1 9/16	0 5/8	2 3/16	3/8	NCFC206-18 NCFC206	FC206	NC206-18 NC206	1.5
	125	80	100	70.7	12	23	10	8	33.8	39.7	15.9	55.6	M10					
35	1 1/4	5 5/16	3 35/64	4 21/64	3 1/16	35/64	1 1/32	7/16	5/16	1 1/2	1 3/4	0 11/16	2 7/16	7/16	NCFC207-20	FC207	NC207-20	2.0
	135	90	110	77.8	14	26	11	8	38	44.5	17.5	61.9	M12					
35	1 3/8	5 5/16	3 35/64	4 21/64	3 1/16	35/64	1 1/32	7/16	5/16	1 1/2	1 3/4	0 11/16	2 9/16	7/16	NCFC207-22 NCFC207	FC207	NC207-22 NC207	2.0
	135	90	110	77.8	14	26	11	8	38	44.5	17.5	65.1	M12					
40	1 1/2	5 23/32	3 15/16	4 23/32	3 11/32	35/64	1 1/32	7/16	25/64	1 11/16	2	0 3/4	2 11/16	7/16	NCFC208-24 NCFC208	FC208	NC208-24 NC208	2.4
	145	100	120	84.8	14	26	11	10	42.8	50.8	19	68.3	M12					
45	1 5/8	6 5/16	4 9/64	5 13/64	3 43/64	5/8	1 1/32	25/64	15/32	1 21/32	2	0 3/4	2 13/16	1/2	NCFC209-26	FC209	NC209-26	3.0
	160	105	132	93.3	16	26	10	12	41.8	50.8	19	71.4	M14					
45	1 11/16	6 5/16	4 9/64	5 13/64	3 43/64	5/8	1 1/32	25/64	15/32	1 21/32	2	0 3/4	2 15/16	1/2	NCFC209-27 NCFC209-28 NCFC209	FC209	NC209-27 NC209-28 NC209	3.0
	160	105	132	93.3	16	26	10	12	41.8	50.8	19	74.6	M14					
50	1 15/16	6 1/2	4 21/64	5 7/16	3 27/32	5/8	1 3/32	25/64	15/32	1 3/4	2 3/32	0 3/4	3 3/8	1/2	NCFC210-31 NCFC210	FC210	NC210-31 NC210	3.5
	165	110	138	97.6	16	28	10	12	44.1	53.1	19	85.7	M14					
55	2	7 9/32	4 59/64	5 29/32	4 11/64	3/4	1 7/32	33/64	15/32	1 7/8	2 1/4	0 7/8	3 1/2	5/8	NCFC211-32	FC211	NC211-32	4.6
	185	125	150	106.1	19	31	13	12	47.9	57.1	22.2	88.9	M16					
55	2 3/16	7 9/32	4 59/64	5 29/32	4 11/64	3/4	1 7/32	33/64	15/32	1 7/8	2 1/4	0 7/8	3 5/8	5/8	NCFC211 NCFC211-35	FC211	NC211 NC211-35	4.6
	185	125	150	106.1	19	31	13	12	47.9	57.1	22.2	92.1	M16					
60	2 1/4	7 11/16	5 5/16	6 19/64	4 29/64	3/4	1 13/32	43/64	15/32	2 9/32	2 5/8	1	4 1/16	5/8	NCFC212-36	FC212	NC212-36	5.7
	195	135	160	113.1	19	36	17	12	58.3	66.7	25.4	103.2	M16					
60	2 7/16	7 11/16	5 5/16	6 19/64	4 29/64	3/4	1 13/32	43/64	15/32	2 9/32	2 5/8	1	4 1/8	5/8	NCFC212 NCFC212-39	FC212	NC212 NC212-39	5.7
	195	135	160	113.1	19	36	17	12	58.3	66.7	25.4	104.8	M16					

Başlı Vida Sıkıştırma Torku (önerilen)

Delik çapı	Başlı Vida büyüklüğü	Önerilen N-m	Maks. N-m
20 - 30 mm	M4 x0,7 or No.8-32UNC	4,2 - 4,6	4,9
35 - 45 mm	M5x0,8 or No.10-24UNC	8,8 - 9,8	10
50 - 55 mm	M6 x1 or 1/4-20UNC	15,2 - 16,8	17
60 mm	M8x1,25 or 5/16-18UNC	38 - 42	44

Not

- Daha fazla teknik bilgi için BS006EN-ODS sayılı genel BBU kataloğumuza bakın.
- NC serisi için çelik ve dökme demir kapaklar mevcuttur.
- Özel gres dolumu sadece talep üzerine yapılır.

Formerly sold as

Koyo

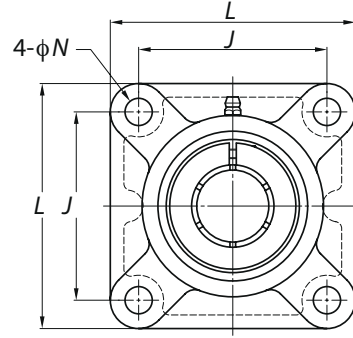
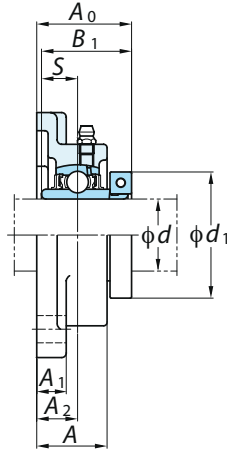
Kare dört cıvatalı flanş tipi üniteler, EasyFit NC Serisi

NCF

Silindir delik (konsantrik sıkma bileziği ile)

iç çap 20 ~ 60 mm

JTEKT



Mil Çapı mm	inç	Ölçüler inç										Cıvata Ölçüsü	Ünite No.	Yatak No.	Rulman No.	Ağırlık kg											
		L	A	J	N	A ₁	A ₂	A ₀	B ₁	S	d ₁						mm										
20	3/4	3 3/8	1	2 33/64	15/32	7/16	19/32	1 3/8	1 9/32	0 1/2	1 3/4	3/8	M10	NCF204-12 NCF204	F204	NC204-12 NC204	0.73										
	86	25.5	64	12	11	15	34.8	32.5	12.7	44.5																	
25	7/8	3 3/4	1 1/16	2 3/4	15/32	1/2	5/8	1 1/2	1 7/16	0 9/16	1 15/16	3/8	M10	NCF205-14 NCF205-15 NCF205	F205	NC205-14 NC205-15 NC205	1.0										
	15/16																	95	27	70	12	13	16	38.2	36.5	14.3	49.2
	1																										
30	1 1/8	4 1/4	1 7/32	3 17/64	15/32	1/2	45/64	1 21/32	1 9/16	0 5/8	2 3/16	3/8	M10	NCF206-18 NCF206	F206	NC206-18 NC206	1.3										
	1 3/16																	108	31	83	12	13	18	41.8	39.7	15.9	55.6
	1 1/4																										
35	1 1/4	4 19/32	1 11/32	3 5/8	35/64	19/32	3/4	1 13/16	1 3/4	0 11/16	2 7/16	7/16	M12	NCF207-20	F207	NC207-20	1.8										
	1 3/8																	117	34	92	14	15	19	46	44.5	17.5	61.9
	1 7/16																										
40	1 1/2	5 1/8	1 13/32	4 1/64	5/8	19/32	53/64	2 3/32	2	0 3/4	2 11/16	1/2	M14	NCF208-24 NCF208	F208	NC208-24 NC208	2.3										
	1 5/8																	137	38	105	16	16	22	53.8	50.8	19	71.4
	1 3/4																										
45	1 5/8	5 13/32	1 1/2	4 9/64	5/8	5/8	55/64	2 1/8	2	0 3/4	2 13/16	1/2	M14	NCF209-26	F209	NC209-26	2.6										
	1 11/16																	137	38	105	16	16	22	53.8	50.8	19	74.6
	1 3/4																										
50	1 15/16	5 5/8	1 9/16	4 3/8	5/8	5/8	55/64	2 7/32	2 3/32	0 3/4	3 3/8	1/2	M14	NCF210-31 NCF210	F210	NC210-31 NC210	3.1										
	2																	143	40	111	16	16	22	56.1	53.1	19	85.7
55	2	6 3/8	1 11/16	5 1/8	3/4	23/32	63/64	2 11/32	2 1/4	0 7/8	3 1/2	5/8	M16	NCF211-32	F211	NC211-32	3.8										
	2 3/16																	162	43	130	19	18	25	59.9	57.1	22.2	88.9
60	2 1/4	6 7/8	1 7/8	5 5/8	3/4	23/32	1 9/64	2 25/32	2 5/8	1	4 1/16	5/8	M16	NCF212-36	F212	NC212-36	4.9										
	2 7/16																	175	48	143	19	18	29	70.3	66.7	25.4	103.2

Başlı Vida Sıkıştırma Torku (önerilen)

Delik çapı	Başlı Vida büyüklüğü	Önerilen N-m	Maks. N-m
20 - 30 mm	M4 x0,7 or No.8-32UNC	4,2 - 4,6	4,9
35 - 45 mm	M5x0,8 or No.10-24UNC	8,8 - 9,8	10
50 - 55 mm	M6 x1 or 1/4-20UNC	15,2 - 16,8	17
60 mm	M8x1,25 or 5/16-18UNC	38 - 42	44

Not

- Daha fazla teknik bilgi için BS006EN-ODS sayılı genel BBU kataloğumuza bakın.
- NC serisi için çelik ve dökme demir kapaklar mevcuttur.
- Özel gres dolumu sadece talep üzerine yapılır.

Formerly sold as

Koyo

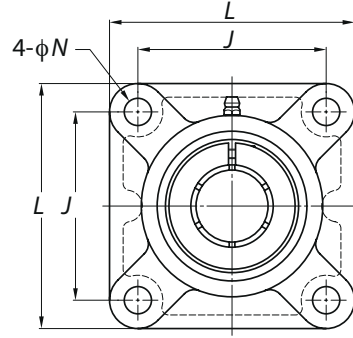
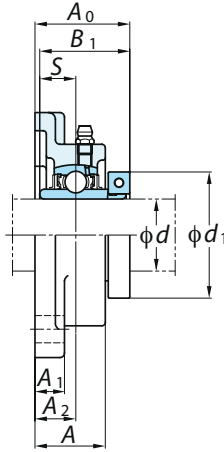
Kare dört cıvatalı flanş tipi üniteler, EasyFit NC Serisi



NCF-E

Silindir delik (konsantrik sıkma bileziği ile)

İç çap 20 ~ 60 mm



Mil Çapı mm	inç	Ölçüler inç										Cıvata Ölçüsü	Ünite No.	Yatak No.	Rulman No.	Ağırlık kg											
		L	A	J	N	A ₁	A ₂	A ₀	B ₁	S	d ₁																
20	3/4	3 3/8	1	2 33/64	7/16	7/16	19/32	1 3/8	1 9/32	0 1/2	1 3/4	3/8	M10	NCF204-12E NCF204E	F204E	NC204-12 NC204	0.73										
	86	25.5	64	11	11	15	34.8	32.5	12.7	44.5																	
25	7/8	3 3/4	1 1/16	2 3/4	15/32	1/2	5/8	1 1/2	1 7/16	0 9/16	1 15/16	3/8	M10	NCF205-14 NCF205-15 NCF205 NCF205-16	F205*	NC205-14 NC205-15 NC205 NC205-16	1.0										
	15/16																	95	27	70	12	13	16	38.2	36.5	14.3	49.2
	1																										
30	1 1/8	4 1/4	1 7/32	3 17/64	33/64	1/2	45/64	1 21/32	1 9/16	0 5/8	2 3/16	7/16	M12	NCF206-18E NCF206E NCF206-19E NCF206-20E	F206E	NC206-18 NC206 NC206-19 NC206-20	1.3										
	1 3/16																	108	31	83	13	13	18	41.8	39.7	15.9	55.6
	1 1/4																										
35	1 1/4	4 19/32	1 11/32	3 5/8	33/64	19/32	3/4	1 13/16	1 3/4	0 11/16	2 7/16	7/16	M12	NCF207-20E	F207E	NC207-20	1.8										
	117																	34	92	13	15	19	46	44.5	17.5	61.9	
	1 3/8																										
40	1 1/2	5 1/8	1 13/32	4 1/64	35/64	19/32	53/64	2 3/32	2	0 3/4	2 11/16	1/2	M14	NCF208-24E NCF208E	F208E	NC208-24 NC208	2.3										
	130																	36	102	14	15	21	52.8	50.8	19	68.3	
	1 5/8																										
45	1 5/8	5 13/32	1 1/2	4 9/64	5/8	5/8	55/64	2 1/8	2	0 3/4	2 13/16	1/2	M14	NCF209-26	F209*	NC209-26	2.6										
	137																	38	105	16	16	22	53.8	50.8	19	71.4	
	1 11/16																										
50	1 3/4	5 13/32	1 1/2	4 9/64	5/8	5/8	55/64	2 1/8	2	0 3/4	2 15/16	1/2	M14	NCF209-27 NCF209-28 NCF209	F209*	NC209-27 NC209-28 NC209	2.6										
	137																	38	105	16	16	22	53.8	50.8	19	74.6	
	1 15/16																										
55	2	6 3/8	1 11/16	5 1/8	43/64	23/32	63/64	2 11/32	2 1/4	0 7/8	3 1/2	5/8	M16	NCF210-31 NCF210 NCF210-32	F210*	NC210-31 NC210 NC210-32	3.1										
	143																	40	111	16	16	22	56.1	53.1	19	85.7	
	2																										
60	2 3/16	6 3/8	1 11/16	5 1/8	43/64	23/32	63/64	2 11/32	2 1/4	0 7/8	3 5/8	5/8	M16	NCF211-32E NCF211E NCF211-35E	F211E	NC211-32 NC211 NC211-35	3.8										
	162																	43	130	17	18	25	59.9	57.1	22.2	88.9	
60	2 1/4	6 7/8	1 7/8	5 5/8	43/64	23/32	1 9/64	2 25/32	2 5/8	1	4 1/16	5/8	M16	NCF212-36E	F212E	NC212-36	4.9										
	175																	48	143	17	18	29	70.3	66.7	25.4	103.2	
	2 7/16																										
60	2 7/16	6 7/8	1 7/8	5 5/8	43/64	23/32	1 9/64	2 25/32	2 5/8	1	4 1/8	5/8	M16	NCF212E NCF212-39E	F212E	NC212 NC212-39	4.9										
	175																	48	143	17	18	29	70.3	66.7	25.4	104.8	

* = Standart F tipi yatak

Başlı Vida Sıkıştırma Torku (önerilen)

Delik çapı	Başlı Vida büyüklüğü	Önerilen N-m	Maks. N-m
20 - 30 mm	M4 x0,7 or No.8-32UNC	4,2 - 4,6	4,9
35 - 45 mm	M5x0,8 or No.10-24UNC	8,8 - 9,8	10
50 - 55 mm	M6 x1 or 1/4-20UNC	15,2 - 16,8	17
60 mm	M8x1,25 or 5/16-18UNC	38 - 42	44

Not

- Daha fazla teknik bilgi için BS006EN-ODS sayılı genel BBU kataloğumuza bakın.
- NC serisi için çelik ve dökme demir kapaklar mevcuttur.
- Özel gres dolumu sadece talep üzerine yapılır.

Formerly sold as

Koyo

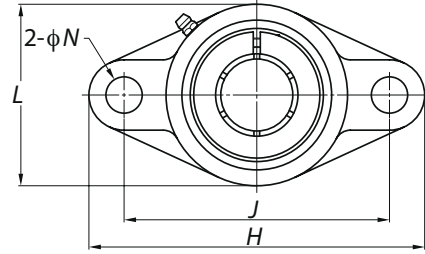
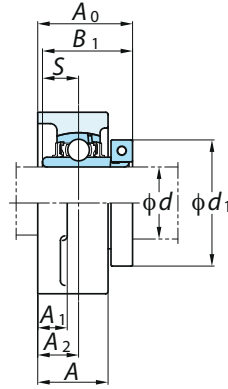
Oval flanş tipi üniteler, EasyFit NC Serisi

NCFL

Silindirik delik (konsantrik sıkma bileziği ile)

iç çap 20 ~ 60 mm

JTEKT



Mil Çapı mm	inç	Ölçüler inç										Cıvata Ölçüsü	Ünite No.	Yatak No.	Rulman No.	Ağırlık kg													
		H	L	A	J	N	A ₁	A ₂	A ₀	B ₁	S						d ₁	mm											
20	3/4	4 7/16	2 3/8	1	3 35/64	15/32	7/16	19/32	1 3/8	1 9/32	0 1/2	1 3/4	3/8	NCFL204-12 NCFL204	FL204	NC204-12 NC204	0.62												
		113	60	25.5	90	12	11	15	34.8	32.5	12.7	44.5	M10																
25	7/8	5 1/8	2 11/16	1 1/16	3 57/64	5/8	1/2	5/8	1 1/2	1 7/16	0 9/16	1 15/16	1/2	NCFL205-14 NCFL205-15 NCFL205 NCFL205-16	FL205	NC205-14 NC205-15 NC205 NC205-16	0.84												
	15/16																	130	68	27	99	16	13	16	38.2	36.5	14.3	49.2	M14
	1																												
30	1 1/8	5 13/16	3 5/32	1 7/32	4 39/64	5/8	1/2	45/64	1 21/32	1 9/16	0 5/8	2 3/16	1/2	NCFL206-18 NCFL206 NCFL206-19 NCFL206-20	FL206	NC206-18 NC206 NC206-19 NC206-20	1.1												
	1 3/16																	148	80	31	117	16	13	18	41.8	39.7	15.9	55.6	M14
	1 1/4																												
35	1 1/4	6 11/32	3 17/32	1 11/32	5 1/8	5/8	9/16	3/4	1 13/16	1 3/4	0 11/16	2 7/16	1/2	NCFL207-20	FL207	NC207-20	1.5												
																		161	90	34	130	16	14	19	46	44.5	17.5	61.9	M14
	1 3/8																	6 11/32	3 17/32	1 11/32	5 1/8	5/8	9/16	3/4	1 13/16	1 3/4	0 11/16	2 9/16	1/2
1 7/16	161	90	34	130	16	14	19	46	44.5	17.5	65.1	M14																	
40	1 1/2	6 7/8	3 15/16	1 13/32	5 43/64	5/8	9/16	53/64	2 3/32	2	0 3/4	2 11/16	1/2	NCFL208-24 NCFL208	FL208	NC208-24 NC208	2.0												
																		175	100	36	144	16	14	21	52.8	50.8	19	68.3	M14
45	1 5/8	7 13/32	4 1/4	1 1/2	5 53/64	3/4	19/32	55/64	2 1/8	2	0 3/4	2 13/16	5/8	NCFL209-26	FL209	NC209-26	2.3												
																		188	108	38	148	19	15	22	53.8	50.8	19	71.4	M16
	1 11/16																	7 13/32	4 1/4	1 1/2	5 53/64	3/4	19/32	55/64	2 1/8	2	0 3/4	2 15/16	5/8
1 3/4	188	108	38	148	19	15	22	53.8	50.8	19	74.6	M16																	
50	1 15/16	7 3/4	4 17/32	1 9/16	6 3/16	3/4	19/32	55/64	2 7/32	2 3/32	0 3/4	3 3/8	5/8	NCFL210-31 NCFL210 NCFL210-32	FL210	NC210-31 NC210 NC210-32	2.8												
																		197	115	40	157	19	15	22	56.1	53.1	19	85.7	M16
	2																	8 13/16	5 1/8	1 11/16	7 1/4	3/4	23/32	63/64	2 11/32	2 1/4	0 7/8	3 1/2	5/8
	224	130	43	184	19	18	25	59.9	57.1	22.2	88.9	M16																	
55	2 3/16	8 13/16	5 1/8	1 11/16	7 1/4	3/4	23/32	63/64	2 11/32	2 1/4	0 7/8	3 5/8	5/8	NCFL211 NCFL211-35	FL211	NC211 NC211-35	3.7												
		224	130	43	184	19	18	25	59.9	57.1	22.2	92.1	M16																
60	2 1/4	9 27/32	5 1/2	1 7/8	7 61/64	29/32	23/32	1 9/64	2 25/32	2 5/8	1	4 1/16	3/4	NCFL212-36	FL212	NC212-36	4.9												
																		250	140	48	202	23	18	29	70.3	66.7	25.4	103.2	M20
	2 7/16																	9 27/32	5 1/2	1 7/8	7 61/64	29/32	23/32	1 9/64	2 25/32	2 5/8	1	4 1/8	3/4
	250	140	48	202	23	18	29	70.3	66.7	25.4	104.8	M20																	

Başlı Vida Sıkıştırma Torku (önerilen)

Delik çapı	Başlı Vida büyüklüğü	Önerilen N-m	Maks. N-m
20 - 30 mm	M4 x0,7 or No.8-32UNC	4,2 - 4,6	4,9
35 - 45 mm	M5x0,8 or No.10-24UNC	8,8 - 9,8	10
50 - 55 mm	M6 x1 or 1/4-20UNC	15,2 - 16,8	17
60 mm	M8x1,25 or 5/16-18UNC	38 - 42	44

Not

- Daha fazla teknik bilgi için BS006EN-ODS sayılı genel BBU kataloğumuza bakın.
- NC serisi için çelik ve dökme demir kapaklar mevcuttur.
- Özel gres dolumu sadece talep üzerine yapılır.

Formerly sold as

Koyo

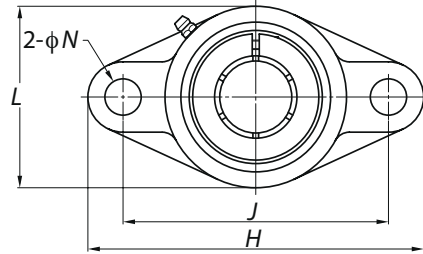
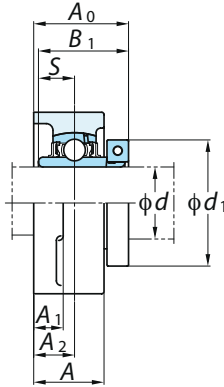
Oval flanş tipi üniteler, EasyFit NC Serisi

NCFL-E

Silindirik delik (konsantrik sıkma bileziği ile)

İç çap 20 ~ 60 mm

JTEKT



Mil Çapı mm	inç	Ölçüler											Cıvata Ölçüsü	Ünite No.	Yatak No.	Rulman No.	Ağırlık kg		
		H	L	A	J	N	A ₁	A ₂	A ₀	B ₁	S	d ₁						inç	
20	3/4	4 7/16	2 3/8	1	3 17/32	25/64	7/16	19/32	1 3/8	1 9/32	0 1/2	1 3/4	5/16	NCFL204-12E	FL204E	NC204-12	NC204	0.62	
		113	60	25.5	89.7	10	11	15	34.8	32.5	12.7	44.5	M8	NCFL204E					
25	7/8	5 1/8	2 11/16	1 1/16	3 57/64	15/32	1/2	5/8	1 1/2	1 7/16	0 9/16	1 15/16	3/8	NCFL205-14E	FL205E	NC205-14	NC205-15	NC205	NC205-16
	15/16													NCFL205-15E					
	1													NCFL205E					
30	1 1/8	5 13/16	3 5/32	1 7/32	4 19/32	15/32	1/2	45/64	1 21/32	1 9/16	0 5/8	2 3/16	3/8	NCFL206-18E	FL206E	NC206-18	NC206	NC206-19	NC206-20
	1 3/16													NCFL206E					
	1 1/4													NCFL206-19E					
35	1 1/4	6 11/32	3 17/32	1 11/32	5 1/8	33/64	9/16	3/4	1 13/16	1 3/4	0 11/16	2 7/16	7/16	NCFL207-20E	FL207E	NC207-20			
														NCFL207-22E					
	1 3/8													NCFL207E					
40	1 1/2	6 7/8	3 15/16	1 13/32	5 21/32	33/64	9/16	53/64	2 3/32	2	0 3/4	2 11/16	7/16	NCFL208-24E	FL208E	NC208-24	NC208		
														NCFL208E					
	1 7/16																		
45	1 5/8	7 13/32	4 1/4	1 1/2	5 27/32	19/32	19/32	55/64	2 1/8	2	0 3/4	2 13/16	1/2	NCFL209-26E	FL209E	NC209-26			
														NCFL209-27E					
	1 11/16													NCFL209-28E					
50	1 15/16	7 3/4	4 17/32	1 9/16	6 3/16	19/32	19/32	55/64	2 7/32	2 3/32	0 3/4	3 3/8	1/2	NCFL210-31E	FL210E	NC210-31	NC210	NC210-32	
														NCFL210E					
	2													NCFL210-32E					
55	2	8 13/16	5 1/8	1 11/16	7 1/4	21/32	23/32	63/64	2 11/32	2 1/4	0 7/8	3 1/2	9/16	NCFL211-32E	FL211E	NC211-32			
														NCFL211E					
	2 3/16													NCFL211-35E					
60	2 1/4	9 27/32	5 1/2	1 7/8	7 61/64	21/32	23/32	1 9/64	2 25/32	2 5/8	1	4 1/16	9/16	NCFL212-36E	FL212E	NC212-36			
														NCFL212E					
	2 7/16													NCFL212-39E					

Başlı Vida Sıkıştırma Torku (önerilen)

Delik çapı	Başlı Vida büyüklüğü	Önerilen N-m	Maks. N-m
20 - 30 mm	M4 x0,7 or No.8-32UNC	4,2 - 4,6	4,9
35 - 45 mm	M5x0,8 or No.10-24UNC	8,8 - 9,8	10
50 - 55 mm	M6 x1 or 1/4-20UNC	15,2 - 16,8	17
60 mm	M8x1,25 or 5/16-18UNC	38 - 42	44

Not

- Daha fazla teknik bilgi için BS006EN-ODS sayılı genel BBU kataloğumuza bakın.
- NC serisi için çelik ve dökme demir kapaklar mevcuttur.
- Özel gres dolumu sadece talep üzerine yapılır.

Formerly sold as

Koyo

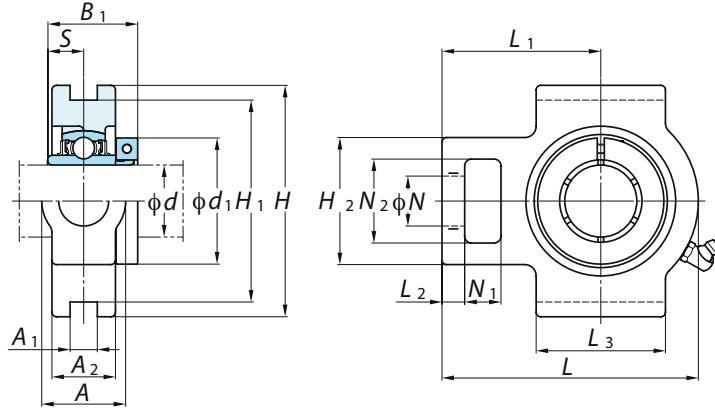
Gerdirme tipi üniteler, EasyFit NC Serisi

NCT

Silindir delik (konsantrik sıkma bileziği ile)

İç çap 20 ~ 60 mm

JTEKT



Mil Çapı mm	inç	Ölçüler inç mm															Ünite No.	Yatak No.	Rulman No.	Ağırlık kg	
		A	A ₁	A ₂	H	H ₁	H ₂	L	L ₁	L ₂	L ₃	N	N ₁	N ₂	B ₁	S					d ₁
20	3/4	1 1/4	15/32	13/16	3 1/2	2 63/64	2	3 11/16	2 13/32	13/32	2	3/4	5/8	1 1/4	1 9/32	0 1/2	1 3/4	NCT204-12 NCT204	T204	NC204-12 NC204	0.90
		32	12	21	89	76	51	94	61	10	51	19	16	32	32.5	12.7	44.5				
25	7/8	1 1/4	15/32	15/16	3 1/2	2 63/64	2	3 13/16	2 7/16	13/32	2	3/4	5/8	1 1/4	1 7/16	0 9/16	1 15/16	NCT205-14 NCT205-15 NCT205	T205	NC205-14 NC205-15 NC205	1.0
	15/16	32	12	24	89	76	51	97	62	10	51	19	16	32	36.5	14.3	49.2				
	1																	NCT205-16		NC205-16	
30	1 1/8	1 15/32	15/32	1 3/16	4 1/32	3 1/2	2 7/32	4 7/16	2 3/4	13/32	2 1/4	7/8	5/8	1 15/32	1 9/16	0 5/8	2 3/16	NCT206-18 NCT206	T206	NC206-18 NC206	1.5
	1 3/16	37	12	28	102	89	56	113	70	10	57	22	16	37	39.7	15.9	55.6				
	1 1/4																	NCT206-19 NCT206-20		NC206-19 NC206-20	
35	1 1/4	1 15/32	15/32	1 3/16	4 1/32	3 1/2	2 17/32	5 3/32	3 1/16	1/2	2 17/32	7/8	5/8	1 15/32	1 3/4	0 11/16	2 7/16	NCT207-20	T207	NC207-20	1.9
		37	12	30	102	89	64	129	78	13	64	22	16	37	44.5	17.5	61.9				
	1 3/8	1 15/32	15/32	1 3/16	4 1/32	3 1/2	2 17/32	5 3/32	3 1/16	1/2	2 17/32	7/8	5/8	1 15/32	1 3/4	0 11/16	2 9/16	NCT207-22 NCT207	T207	NC207-22 NC207	1.9
1 7/16	37	12	30	102	89	64	129	78	13	64	22	16	37	44.5	17.5	65.1			NC207-23		
40	1 1/2	1 15/16	5/8	1 5/16	4 1/2	4 1/4	3 9/32	5 21/32	3 15/32	19/32	3 9/32	1 5/32	3/4	1 15/16	2	0 3/4	2 11/16	NCT208-24 NCT208	T208	NC208-24 NC208	2.9
		49	16	33	114	102	83	144	88	16	83	29	19	49	50.8	19	68.3				
45	1 5/8	1 15/16	5/8	1 3/8	4 19/32	4 1/4	3 9/32	5 21/32	3 7/16	5/8	3 9/32	1 5/32	3/4	1 15/16	2	0 3/4	2 13/16	NCT209-26	T209	NC209-26	2.8
		49	16	35	117	102	83	144	87	16	83	29	19	49	50.8	19	71.4				
	1 11/16	1 15/16	5/8	1 3/8	4 19/32	4 1/4	3 9/32	5 21/32	3 7/16	5/8	3 9/32	1 5/32	3/4	1 15/16	2	0 3/4	2 15/16	NCT209-27 NCT209-28 NCT209	T209	NC209-27 NC209-28 NC209	2.8
1 3/4	49	16	35	117	102	83	144	87	16	83	29	19	49	50.8	19	74.6					
50	1 15/16	1 15/16	5/8	1 15/32	4 19/32	4 1/4	3 9/32	5 7/8	3 17/32	5/8	3 3/8	1 5/32	3/4	1 15/16	2 3/32	0 3/4	3 3/8	NCT210-31 NCT210	T210	NC210-31 NC210	3.2
	2	49	16	37	117	102	83	149	90	16	86	29	19	49	53.1	19	85.7			NC210-32	
55	2	2 17/32	55/64	1 1/2	5 3/4	5 1/8	4 1/32	6 23/32	4 3/16	3/4	3 3/4	1 3/8	31/32	2 17/32	2 1/4	0 7/8	3 1/2	NCT211-32	T211	NC211-32	4.4
		64	22	38	146	130	102	171	106	19	95	35	25	64	57.1	22.2	88.9				
	2 3/16	2 17/32	55/64	1 1/2	5 3/4	5 1/8	4 1/32	6 23/32	4 3/16	3/4	3 3/4	1 3/8	31/32	2 17/32	2 1/4	0 7/8	3 5/8	NCT211 NCT211-35	T211	NC211 NC211-35	4.4
	64	22	38	146	130	102	171	106	19	95	35	25	64	57.1	22.2	92.1					
60	2 1/4	2 17/32	55/64	1 21/32	5 3/4	5 1/8	4 1/32	7 5/8	4 11/16	3/4	4 1/32	1 3/8	1 1/4	2 17/32	2 5/8	1	4 1/16	NCT212-36	T212	NC212-36	5.6
		64	22	42	146	130	102	194	119	19	102	35	32	64	66.7	25.4	103.2				
	2 7/16	2 17/32	55/64	1 21/32	5 3/4	5 1/8	4 1/32	7 5/8	4 11/16	3/4	4 1/32	1 3/8	1 1/4	2 17/32	2 5/8	1	4 1/8	NCT212 NCT212-39	T212	NC212 NC212-39	5.6
	64	22	42	146	130	102	194	119	19	102	35	32	64	66.7	25.4	104.8					

Başlı Vida Sıkıştırma Torku (önerilen)

Delik çapı	Başlı Vida büyüklüğü	Önerilen N-m	Maks. N-m
20 - 30 mm	M4 x0,7 or No.8-32UNC	4,2 - 4,6	4,9
35 - 45 mm	M5x0,8 or No.10-24UNC	8,8 - 9,8	10
50 - 55 mm	M6 x1 or 1/4-20UNC	15,2 - 16,8	17
60 mm	M8x1,25 or 5/16-18UNC	38 - 42	44

Not

- Daha fazla teknik bilgi için BS006EN-ODS sayılı genel BBU kataloğumuza bakın.
- NC serisi için çelik ve dökme demir kapaklar mevcuttur.
- Özel gres dolumu sadece talep üzerine yapılır.

Formerly sold as

Koyo

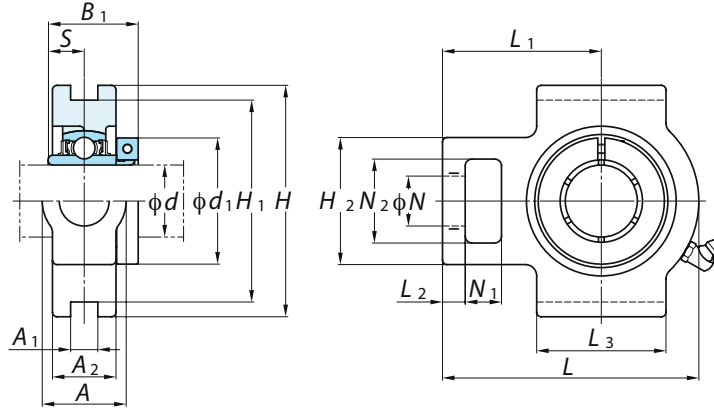
Gerdirme tipi üniteler, EasyFit NC Serisi

NCT-E

Silindir delik (konsantrik sıkma bileziği ile)

iç çap 20 ~ 60 mm

JTEKT



Mil Çapı mm inç	d	Ölçüler inç mm															Ünite No.	Yatak No.	Rulman No.	Ağırlık kg	
		A	A ₁	A ₂	H	H ₁	H ₂	L	L ₁	L ₂	L ₃	N	N ₁	N ₂	B ₁	S					d ₁
20	3/4	1 1/4	17/32	13/16	3 1/2	3	2	3 11/16	2 13/32	13/32	2	3/4	5/8	1 1/4	1 9/32	0 1/2	1 3/4	NCT204-12E NCT204E	T204E	NC204-12 NC204	0.90
		32	13.5	21	89	76.2	51	94	61	10	51	19	16	32	32.5	12.7	44.5				
25	7/8	1 1/4	17/32	15/16	3 1/2	3	2	3 13/16	2 7/16	13/32	2	3/4	5/8	1 1/4	1 7/16	0 9/16	1 15/16	NCT205-14E NCT205-15E NCT205E NCT205-16E	T205E	NC205-14 NC205-15 NC205 NC205-16	1.0
	15/16	1 1/4	17/32	15/16	3 1/2	3	2	3 13/16	2 7/16	13/32	2	3/4	5/8	1 1/4	1 7/16	0 9/16	1 15/16				
	1	32	13.5	24	89	76.2	51	97	62	10	51	19	16	32	36.5	14.3	49.2				
30	1 1/8	1 15/32	17/32	1 3/16	4 1/32	3 1/2	2 7/32	4 7/16	2 3/4	13/32	2 1/4	7/8	5/8	1 15/32	1 9/16	0 5/8	2 3/16	NCT206-18E NCT206E NCT206-19E NCT206-20E	T206E	NC206-18 NC206 NC206-19 NC206-20	1.5
	1 3/16	1 15/32	17/32	1 3/16	4 1/32	3 1/2	2 7/32	4 7/16	2 3/4	13/32	2 1/4	7/8	5/8	1 15/32	1 9/16	0 5/8	2 3/16				
	1 1/4	37	13.5	28	102	88.9	56	113	70	10	57	22	16	37	39.7	15.9	55.6				
35	1 1/4	1 15/32	17/32	1 3/16	4 1/32	3 1/2	2 17/32	5 3/32	3 1/16	1/2	2 17/32	7/8	5/8	1 15/32	1 3/4	0 11/16	2 7/16	NCT207-20E	T207E	NC207-20	1.9
	1 3/8	1 15/32	17/32	1 3/16	4 1/32	3 1/2	2 17/32	5 3/32	3 1/16	1/2	2 17/32	7/8	5/8	1 15/32	1 3/4	0 11/16	2 9/16	NCT207-22E NCT207E NCT207-23E	T207E	NC207-22 NC207 NC207-23	1.9
	1 7/16	37	13.5	30	102	88.9	64	129	78	13	64	22	16	37	44.5	17.5	65.1				
40	1 1/2	1 15/16	11/16	1 5/16	4 1/2	4	3 9/32	5 21/32	3 15/32	5/8	3 9/32	1 5/32	3/4	1 15/16	2	0 3/4	2 11/16	NCT208-24E NCT208E	T208E	NC208-24 NC208	2.9
		49	17.5	33	114	101.6	83	144	88	16	83	29	19	49	50.8	19	68.3				
45	1 5/8	1 15/16	11/16	1 3/8	4 19/32	4	3 9/32	5 21/32	3 7/16	5/8	3 9/32	1 5/32	3/4	1 15/16	2	0 3/4	2 13/16	NCT209-26E	T209E	NC209-26	2.8
	1 11/16	1 15/16	11/16	1 3/8	4 19/32	4	3 9/32	5 21/32	3 7/16	5/8	3 9/32	1 5/32	3/4	1 15/16	2	0 3/4	2 15/16	NCT209-27E NCT209-28E NCT209E	T209E	NC209-27 NC209-28 NC209	2.8
	1 3/4	49	17.5	35	117	101.6	83	144	87	16	83	29	19	49	50.8	19	74.6				
50	1 15/16	1 15/16	11/16	1 15/32	4 19/32	4	3 9/32	5 7/8	3 17/32	5/8	3 3/8	1 5/32	3/4	1 15/16	2 3/32	0 3/4	3 3/8	NCT210-31E NCT210E NCT210-32E	T210E	NC210-31 NC210 NC210-32	3.2
	2	49	17.5	37	117	101.6	83	149	90	16	86	29	19	49	53.1	19	85.7				
55	2	2 17/32	1 1/16	1 1/2	5 3/4	5 1/8	4 1/32	6 23/32	4 3/16	3/4	3 3/4	1 3/8	31/32	2 17/32	2 1/4	0 7/8	3 1/2	NCT211-32E	T211E	NC211-32	4.4
		64	27	38	146	130.17	102	171	106	19	95	35	25	64	57.1	22.2	88.9				
60	2 3/16	2 17/32	1 1/16	1 1/2	5 3/4	5 1/8	4 1/32	6 23/32	4 3/16	3/4	3 3/4	1 3/8	31/32	2 17/32	2 1/4	0 7/8	3 3/8	NCT211E NCT211-35E	T211E	NC211 NC211-35	4.4
		64	27	38	146	130.17	102	171	106	19	95	35	25	64	57.1	22.2	92.1				
60	2 1/4	2 17/32	1 1/16	1 21/32	5 3/4	5 1/8	4 1/32	7 5/8	4 11/16	3/4	4 1/32	1 3/8	1 1/4	2 17/32	2 5/8	1	4 1/16	NCT212-36E	T212E	NC212-36	5.6
		64	27	42	146	130.17	102	194	119	19	102	35	32	64	66.7	25.4	103.2				
60	2 7/16	2 17/32	1 1/16	1 21/32	5 3/4	5 1/8	4 1/32	7 5/8	4 11/16	3/4	4 1/32	1 3/8	1 1/4	2 17/32	2 5/8	1	4 1/8	NCT212E NCT212-39E	T212E	NC212 NC212-39	5.6
		64	27	42	146	130.17	102	194	119	19	102	35	32	64	66.7	25.4	104.8				

Başlı Vida Sıkıştırma Torku (önerilen)

Delik çapı	Başlı Vida büyüklüğü	Önerilen N-m	Maks. N-m
20 - 30 mm	M4 x0,7 or No.8-32UNC	4,2 - 4,6	4,9
35 - 45 mm	M5x0,8 or No.10-24UNC	8,8 - 9,8	10
50 - 55 mm	M6 x1 or 1/4-20UNC	15,2 - 16,8	17
60 mm	M8x1,25 or 5/16-18UNC	38 - 42	44

Not

- Daha fazla teknik bilgi için BS006EN-ODS sayılı genel BBU kataloğumuza bakın.
- NC serisi için çelik ve dökme demir kapaklar mevcuttur.
- Özel gres dolumu sadece talep üzerine yapılır.

Formerly sold as

Koyo

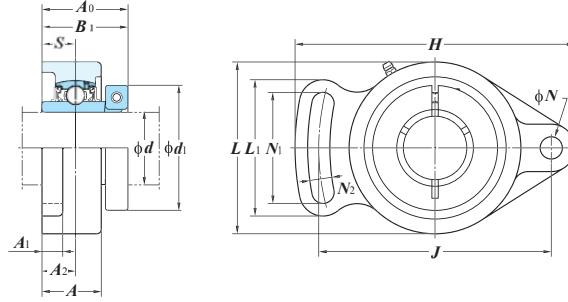
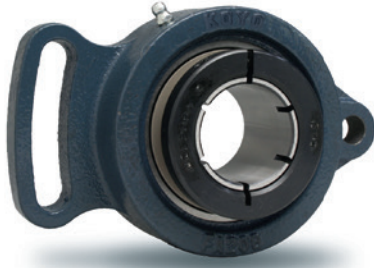
Ayarlanabilir oval flanş tipi üniteler, EasyFit NC Serisi

NCFA

Silindirik delik (konsantrik sıkma bileziği ile)

İç çap 20 ~ 55 mm

JTEKT



Mil Çapı mm inç	Ölçüler inç mm																Cıvata Ölçüsü inç mm	Ünite No.	Yatak No.	Rulman No.	Ağırlık kg
	H	L	A	J	N	N ₁	N ₂	L ₁	A ₁	A ₂	A ₀	B ₁	S	d1							
20 3/4	3 55/64 98	2 21/64 59	1 15/16 24	3 5/64 78	2 25/64 10	1 37/64 40	2 25/64 10	1 31/32 50	7/16 11	3 35/64 13.8	1 11/32 34	1 9/32 32.5	0 1/2 12.7	1 1/4 44.5	5/16 M8	NCFA204-12 NCFA204	FA204	NC204-12 NC204	0.56		
25 7/8 1 15/16 1	4 7/8 124	2 3/4 70	1 1/16 27	3 55/64 98	7/16 11	1 59/64 49	7/16 11	2 33/64 64	3 33/64 13	0 5/8 16	1 1/2 38	1 7/16 36.5	0 9/16 14.3	1 15/16 49.2	3/8 M10	NCFA205-14 NCFA205-15 NCFA205-16	FA205	NC205-14 NC205-15 NC205-16	0.88		
30 1 1/8 1 3/16 1 1/4	5 35/64 141	3 17/64 83	1 3/16 30	4 39/64 117	7/16 11	2 13/64 56	1 15/32 12	2 43/64 68	3 33/64 13	4 45/64 17.8	1 21/32 42	1 9/16 39.7	0 5/8 15.9	2 3/16 55.6	3/8 M10	NCFA206-18 NCFA206-19 NCFA206-20	FA206	NC206-18 NC206-19 NC206-20	1.18		
35 1 1/4 1 5/16 1 3/8 1 7/16	6 7/64 155	3 25/32 96	1 11/32 34	5 1/8 130	3 33/64 13	2 31/64 63	3 33/64 13	2 61/64 75	3 35/64 14	4 47/64 18.6	1 13/16 46	1 3/4 44.5	0 11/16 17.5	2 7/16 61.9	7/16 M12	NCFA207-20	FA207	NC207-20	1.82		
35 1 5/16 1 3/8 1 7/16	6 7/64 155	3 25/32 96	1 11/32 34	5 1/8 130	3 33/64 13	2 31/64 63	3 33/64 13	2 61/64 75	3 35/64 14	4 47/64 18.6	1 13/16 46	1 3/4 44.5	0 11/16 17.5	2 9/16 65.1	7/16 M12	NCFA207-22 NCFA207-23 NCFA207-23	FA207	NC207-21 NC207-22 NC207-23 NC207-23	1.82		
40 1 1/2 1 9/16	6 47/64 171	4 9/64 105	1 1/2 38	5 43/64 144	3 33/64 13	2 3/4 70	3 33/64 13	3 5/16 84	3 35/64 14	1 13/16 20.8	2 3/32 53	2 50.8	0 3/4 19	2 11/16 68.3	7/16 M12	NCFA208-24 NCFA208	FA208	NC208-24 NC208-25 NC208	2.26		
45 1 5/8 1 11/16 1 3/4	7 3/64 179	4 3/8 111	1 37/64 40	5 53/64 148	1 19/32 15	2 53/64 72	1 19/32 15	3 15/32 88	3 35/64 14	5 55/64 21.8	2 1/8 54	2 50.8	0 3/4 19	2 13/16 71.4	1/2 M14	NCFA209-26	FA209	NC209-26	2.12		
45 1 11/16 1 3/4	7 3/64 179	4 3/8 111	1 37/64 40	5 53/64 148	1 19/32 15	2 53/64 72	1 19/32 15	3 15/32 88	3 35/64 14	5 55/64 21.8	2 1/8 54	2 50.8	0 3/4 19	2 15/16 74.6	1/2 M14	NCFA209-27 NCFA209-28 NCFA209	FA209	NC209-27 NC209-28 NC209	2.12		
50 1 7/8 1 15/16 2	7 7/16 189	4 9/16 116	1 37/64 40	6 3/16 157	1 19/32 15	2 61/64 75	1 19/32 15	3 5/8 92	3 35/64 14	5 57/64 22.5	2 1/4 57	2 3/32 53.1	0 3/4 19	3 3/8 85.7	1/2 M14	NCFA210-31 NCFA210-32 NCFA210-32	FA210	NC210-30 NC210-31 NC210-32	2.6		
55 2 2 1/8 2 3/16	8 1/2 216	5 15/16 133	1 47/64 44	7 1/4 184	5/8 16	3 25/64 86	5/8 16	4 1/64 102	2 25/32 20	1 1/64 25.7	2 13/32 61	2 1/4 57.1	0 7/8 22.2	3 1/2 88.9	1/2 M14	NCFA211-32	FA211	NC211-32	3.9		
55 2 1/8 2 3/16	8 1/2 216	5 15/16 133	1 47/64 44	7 1/4 184	5/8 16	3 25/64 86	5/8 16	4 1/64 102	2 25/32 20	1 1/64 25.7	2 13/32 61	2 1/4 57.1	0 7/8 22.2	3 5/8 92.1	1/2 M14	NCFA211 NCFA211-35	FA211	NC211-34 NC211 NC211-35	3.9		

Başlı Vida Sıkıştırma Torku (önerilen)

Delik çapı	Başlı Vida büyüklüğü	Önerilen N-m	Maks. N-m
20 - 30 mm	M4 x0,7 or No.8-32UNC	4,2 - 4,6	4,9
35 - 45 mm	M5x0,8 or No.10-24UNC	8,8 - 9,8	10
50 - 55 mm	M6 x1 or 1/4-20UNC	15,2 - 16,8	17
60 mm	M8x1,25 or 5/16-18UNC	38 - 42	44

Not

- Daha fazla teknik bilgi için BS006EN-ODS sayılı genel BBU kataloğumuza bakın.
- NC serisi için çelik ve dökme demir kapaklar mevcuttur.
- Özel gres dolumu sadece talep üzerine yapılır.

Formerly sold as

Koyo

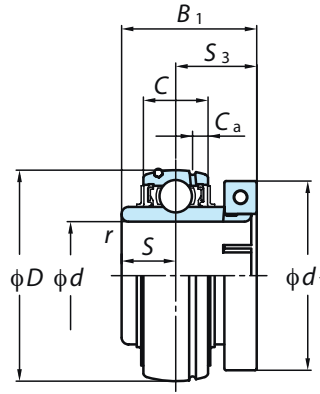
Yataklı rulman elemanları, EasyFit NC Serisi

NC

Silindir delik ve küresel dış çap (konsantrik sıkma bileziği ile)

iç çap 20 ~ 60 mm

JTEKT



Mil Çapı mm inç	Ölçüler inç mm				Ana Yük Değerleri kN		Katsayı f ₀	Rulman No.	Bilezik No.	Ölçüler inç mm				Başlı vida inç mm	Ağırlık kg	
	D	B ₁	C	r	C _r	C _{or}				C _a	S	S ₃	d ₁			
20	3/4	1 ^{27/32}	1 ^{9/32}	0 ^{5/8}	0 ^{3/64}	12.8	6.65	13.2	NC204-12 NC204	UCL204B UCL204B	0 ^{5/32}	0 ^{1/2}	0 ^{25/32}	1 ^{3/4}	No.8-32UNC M4x0.7	0.30
		47	32.5	16	1						4	12.7	19.8	44.5		
25	7/8 15/16	2 ^{3/64}	1 ^{7/16}	0 ^{43/64}	0 ^{3/64}	14.0	7.85	13.9	NC205-14 NC205-15 NC205	UCL205A UCL205A UCL205AM	0 ^{13/64}	0 ^{9/16}	0 ^{7/8}	1 ^{15/16}	No.8-32UNC No.8-32UNC M4x0.7	0.40
		52	36.5	17	1						5	14.3	22.2	49.2		
		1														
30	1 1/8 1 3/16 1 1/4	2 ^{7/16}	1 ^{9/16}	0 ^{3/4}	0 ^{3/64}	19.5	11.3	13.9	NC206-18 NC206 NC206-19 NC206-20	UCL206A UCL206AM UCL206A UCL206A	0 ^{13/64}	0 ^{5/8}	0 ^{15/16}	2 ^{3/16}	No.8-32UNC M4x0.7 No.8-32UNC No.8-32UNC	0.50
		62	39.7	19	1						5	15.9	23.8	55.6		
35	1 1/4 1 3/8 1 7/16	2 ^{53/64}	1 ^{3/4}	0 ^{25/32}	0 ^{3/64}	25.7	15.4	13.9	NC207-20 NC207-22 NC207 NC207-23	UCL207A UCL207B UCL207BM UCL207B	0 ^{7/32}	0 ^{11/16}	1 ^{1/16}	2 ^{7/16}	No.10-24UNC M5x0.8 No.10-24UNC	0.80 0.80
		72	44.5	20	1.1						5.5	17.5	27	61.9		
40	1 1/2	3 ^{5/32}	2	0 ^{53/64}	0 ^{3/64}	29.1	17.8	14.0	NC208-24 NC208	UCL208A UCL208AM	0 ^{15/64}	0 ^{3/4}	1 ^{1/4}	2 ^{11/16}	No.10-24UNC M5x0.8	1.0
		80	50.8	21	1.1						6	19	31.8	68.3		
45	1 5/8 1 11/16 1 3/4	3 ^{11/32}	2	0 ^{55/64}	0 ^{3/64}	34.1	21.3	14.0	NC209-26 NC209-27 NC209-28 NC209	UCL209A UCL209B UCL209B UCL209BM	0 ^{15/64}	0 ^{3/4}	1 ^{1/4}	2 ^{13/16}	No.10-24UNC No.10-24UNC M5x0.8	1.1 1.1
		85	50.8	22	1.1						6	19	31.8	71.4		
50	1 15/16 2	3 ^{35/64}	2 ^{3/32}	0 ^{15/16}	0 ^{3/64}	35.1	23.3	14.4	NC210-31 NC210 NC210-32	UCL210A UCL210AM UCL210A	0 ^{15/64}	0 ^{3/4}	1 ^{11/32}	3 ^{3/8}	1/4-20UNC M6x1 1/4-20UNC	1.4
		90	53.1	24	1.1						6	19	34.1	85.7		
55	2 2 3/16	3 ^{15/16}	2 ^{1/4}	0 ^{63/64}	0 ^{1/16}	43.4	29.4	14.4	NC211-32 NC211 NC211-35	UCL211A UCL211BM UCL211B	0 ^{9/32}	0 ^{7/8}	1 ^{3/8}	3 ^{1/2}	1/4-20UNC M6x1 1/4-20UNC	1.5 1.5
		100	57.1	25	1.5						7	22.2	34.9	88.9		
60	2 1/4 2 7/16	4 ^{21/64}	2 ^{5/8}	1 ^{1/16}	0 ^{1/16}	52.4	36.2	14.4	NC212-36 NC212 NC212-39	UCL212A UCL212BM UCL212B	0 ^{19/64}	1	1 ^{5/8}	4 ^{1/16}	5/16-18UNC M8x1.25 5/16-18UNC	2.2 2.2
		110	66.7	27	1.5						7.5	25.4	41.3	103.2		
		110	66.7	27	1.5	52.4	36.2	14.4			0 ^{19/64}	1	1 ^{5/8}	4 ^{1/8}		

Başlı Vida Sıkıştırma Torku (önerilen)

Delik çapı	Başlı Vida büyüklüğü	Önerilen N-m	Maks. N-m
20 - 30 mm	M4 x0,7 or No.8-32UNC	4,2 - 4,6	4,9
35 - 45 mm	M5x0,8 or No.10-24UNC	8,8 - 9,8	10
50 - 55 mm	M6 x1 or 1/4-20UNC	15,2 - 16,8	17
60 mm	M8x1,25 or 5/16-18UNC	38 - 42	44

Not

- Daha fazla teknik bilgi için BS006EN-ODS sayılı genel BBU kataloğumuza bakın.
- NC serisi için çelik ve dökme demir kapaklar mevcuttur.
- Özel gres dolumu sadece talep üzerine yapılır.

Formerly sold as

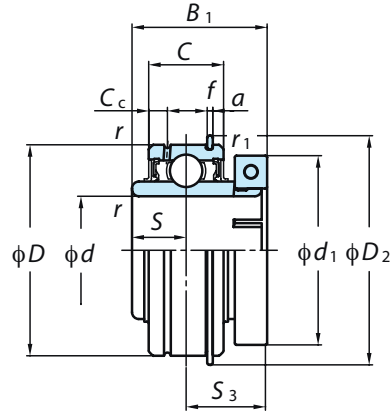
Koyo

Yataklı rulman elemanları, EasyFit NC Serisi

NC-ERC

Silindirik dış çaplı ve yaylı segmanlı silindir delik (konsantrik sıkma bileziği ile)

İç çap 20 ~ 60 mm



Mil Çapı mm inç	Ölçüler														Rulman No.	Ağırlık kg
	d	D mm inç	C mm inç	r mm inç	r_1 (min) mm inç	C_c mm inç	a mm inç	f mm inç	D_2 mm inç							
20	$\frac{3}{4}$	47 $1 \frac{27}{32}$	16 $0 \frac{5}{8}$	1 $0 \frac{3}{64}$	0.5 $0 \frac{1}{64}$	4 $0 \frac{5}{32}$	2.38 $0 \frac{3}{32}$	1.07 $0 \frac{3}{64}$	52.5 $2 \frac{1}{16}$						NC-ERC204-12 NC-ERC204	0.36
25	$\frac{7}{8}$	52 $2 \frac{3}{64}$	19 $0 \frac{3}{4}$	1 $0 \frac{3}{64}$	0.5 $0 \frac{1}{64}$	5 $0 \frac{13}{64}$	2.38 $0 \frac{3}{32}$	1.07 $0 \frac{3}{64}$	57.7 $2 \frac{17}{64}$						NC-ERC205-14 NC-ERC205-15 NC-ERC205	0.47
	$1 \frac{15}{16}$														NC-ERC205-16	
30	$1 \frac{1}{8}$	62 $2 \frac{7}{16}$	22 $0 \frac{55}{64}$	1 $0 \frac{3}{64}$	0.5 $0 \frac{1}{64}$	5.5 $0 \frac{7}{32}$	3.18 $0 \frac{1}{8}$	1.65 $0 \frac{1}{16}$	67.5 $2 \frac{21}{32}$						NC-ERC206-18 NC-ERC206	0.57
	$1 \frac{3}{16}$														NC-ERC206-19	
	$1 \frac{1}{4}$														NC-ERC206-20	
35	$1 \frac{1}{4}$	72 $2 \frac{53}{64}$	24 $0 \frac{15}{16}$	1.1 $0 \frac{3}{64}$	0.5 $0 \frac{1}{64}$	5.5 $0 \frac{7}{32}$	3.18 $0 \frac{1}{8}$	1.65 $0 \frac{1}{16}$	78.4 $3 \frac{3}{32}$						NC-ERC207-20	0.95
	$1 \frac{3}{8}$														NC-ERC207-22	
	$1 \frac{7}{16}$														NC-ERC207 NC-ERC207-23	
40	$1 \frac{1}{2}$	80 $3 \frac{5}{32}$	28 $1 \frac{7}{64}$	1.1 $0 \frac{3}{64}$	0.5 $0 \frac{1}{64}$	6 $0 \frac{15}{64}$	3.18 $0 \frac{1}{8}$	1.65 $0 \frac{1}{16}$	86.4 $3 \frac{13}{32}$						NC-ERC208-24 NC-ERC208	1.2
45	$1 \frac{5}{8}$	85 $3 \frac{11}{32}$	28 $1 \frac{7}{64}$	1.1 $0 \frac{3}{64}$	0.5 $0 \frac{1}{64}$	6 $0 \frac{15}{64}$	3.18 $0 \frac{1}{8}$	1.65 $0 \frac{1}{16}$	91.4 $3 \frac{19}{32}$						NC-ERC209-26	1.3
	$1 \frac{11}{16}$														NC-ERC209-27	
	$1 \frac{3}{4}$														NC-ERC209-28 NC-ERC209	
50	$1 \frac{15}{16}$	90 $3 \frac{35}{64}$	28 $1 \frac{7}{64}$	1.1 $0 \frac{3}{64}$	0.5 $0 \frac{1}{64}$	7.5 $0 \frac{19}{64}$	3.18 $0 \frac{1}{8}$	2.41 $0 \frac{3}{32}$	96.3 $3 \frac{51}{64}$						NC-ERC210-31 NC-ERC210	1.6
	2														NC-ERC210-32	
55	2	100 $3 \frac{15}{16}$	30 $1 \frac{3}{16}$	1.5 $0 \frac{1}{16}$	0.5 $0 \frac{1}{64}$	7.5 $0 \frac{19}{64}$	3.18 $0 \frac{1}{8}$	2.41 $0 \frac{3}{32}$	106.3 $4 \frac{3}{16}$						NC-ERC211-32	1.8
	$2 \frac{3}{16}$														NC-ERC211 NC-ERC211-35	
60	$2 \frac{1}{4}$	110 $4 \frac{21}{64}$	32 $1 \frac{17}{64}$	1.5 $0 \frac{1}{16}$	0.5 $0 \frac{1}{64}$	7.5 $0 \frac{19}{64}$	3.18 $0 \frac{1}{8}$	2.41 $0 \frac{3}{32}$	116.4 $4 \frac{37}{64}$						NC-ERC212-36 NC-ERC212	2.5
	$2 \frac{7}{16}$														NC-ERC212-39	

Not: Ekstra ölçüler ve yük değerleri için NC eleman serisine bakın.

Başlı Vida Sıkıştırma Torku (önerilen)

Delik çapı	Başlı Vida büyüklüğü	Önerilen N-m	Maks. N-m
20 - 30 mm	M4 x0,7 or No.8-32UNC	4,2 - 4,6	4,9
35 - 45 mm	M5x0,8 or No.10-24UNC	8,8 - 9,8	10
50 - 55 mm	M6 x1 or 1/4-20UNC	15,2 - 16,8	17
60 mm	M8x1,25 or 5/16-18UNC	38 - 42	44

Not

- Daha fazla teknik bilgi için BS006EN-ODS sayılı genel BBU kataloğumuza bakın.
- NC serisi için çelik ve dökme demir kapaklar mevcuttur.
- Özel gres dolumu sadece talep üzerine yapılır.

Formerly sold as

Koyo

S3 P11

Standart "J" tipi yatak ile rotasyon önleme pimi, yüksek hızlı uygulamalarda çok güvenli yatak uyumu sağlar.



Not: BBU'lar %100 gürültü testinden geçmiştir ve üfleyici uygulamalar için uygundur.

Üfleyici kullanımı için önerilen mil toleransı

Üfleyiciler için NC rulmanlarda kullanılan milin boyutsal toleransı.

birim: μm

Mil çapı (mm)		Milin boyutsal toleransı			
		h5		j5	
Min.	Maks.(Dahil)	Maks.	Min.	Maks.	Min.
10	18	0	- 8	+5	- 3
18	30	0	- 9	+5	- 4
30	50	0	-11	+6	- 5
50	80	0	-13	+6	- 7
80	120	0	-15	+6	- 9
120	180	0	-18	+7	-11

Üç Önemli önceki Gelişme

Koyo'nun yeni EasyFit NC BBU'ları, BBU serisinin tamamına daha önce uygulanmış üç önemli gelişmeyi de bünyesinde barındırır.

1. Yeni Optimize Edilmiş Performans Tasarımı

Girinti içermeyen düz tabanlı Dik Tip Yatak. Optimize edilmiş performans tasarımı, yatağın gövdeye daha güvenli ve sağlam şekilde monte edilmesini sağlar. Yatak ile bağlanacağı gövde arasında boşluk olmadığından titreşim olmaz. Her iki yandaki eski tip köprülerin kaldırılması ve civata alanının büyütülmesi, işlevselliği artırır. Bu, köprülerin kaldırılmasına rağmen %30 daha fazla güç ve %7 daha az ağırlık elde edilmesini sağlayan çığır açıcı yeni bir yataktır.

Yeni tasarım



Dik tip optimize edilmiş tasarım

Eski tasarım



2. Yüksek Performanslı Yağlama için Yeni Keçe Tasarımı

İçe bakan yanaklı, yeni tasarım contalar, gresin çalışma sırasında bilyelere ve çalışma yüzeylerine doğru geri akmasını sağlar. Böylece yağlama performansı artar ve rulman ömrü uzar.



Şek. 3: Yağlama için yeni keçe tasarımı

3. Lityum Rulman Gresini İyileştirmesi

Lityum Rulman Gresini İyileştirmesi → → → **Yüksek Yüke, Aşırı Basınca ve Suya Dayanıklılık.**

Yataklı rulmanlarımız, yüksek kaliteli lityum esaslı rulman gresi ve keçeler ile birlikte sunulur. NLGI 2 lityum rulman gresi, yaygın olarak kullanılan lityum sabunu rulman greslerine kıyasla çeşitli avantajlar sağlar. Bu gres; geniş sıcaklık aralıkları, değişen hızlar, su kirliliği, titreşim, aşırı basınç, ağır ve şok yükler gibi zorlu çalışma koşullarında son derece iyi performans gösterir. Lityum rulman gresi ayrıca mevcut gres formülüyle de uyumludur.

Not: Koyo BBU'larının yeni JHS jenerasyonu hakkında daha ayrıntılı bilgi için lütfen broşüre bakın: JHS-3i Yeni Yataklar

Formerly sold as

Koyo

European Bearings Network

JTEKT Europe Bearings BV
European Headquarters and Central Warehouse
Markerkant 13-01
1314 AL Almere, The Netherlands
☎ +31 (0)36 538 3333
✉ info-eu@jtekt.eu

JTEKT Europe Bearings B.V. – Italian Branch Office
Territory: Italy
Via G. Stephenson 43a
20157 Milano, Italy
☎ +39 (0)22 951 0844
✉ info-eu@jtekt.eu

JTEKT Sales UK Ltd.
Territory: United Kingdom & Ireland
Whitehall Avenue, Kingston, Milton Keynes
Buckinghamshire MK10 OAX, U.K.
☎ +44 (0)19 082 89300
✉ info-eu@jtekt.eu

JTEKT Europe Bearings B.V. – Scandinavian Branch Office
Territory: Sweden, Norway & Finland
Kanalvägen 5a
19461 Upplands-Väsby, Sweden
☎ +46 (0)85 942 1210
✉ info-eu@jtekt.eu

JTEKT Europe Bearings B.V.
Romanian Representative Office
Territory: Romania, Greece & Israel
Str. Vasile Vasilevici Stroescu nr 8, apt. 2, sector 2
021274 Bucuresti, Romania
☎ +40 (0) 217941819 / +40 (0) 217944034
☎ +40 (0) 744.423.561
✉ carmen.berbecaru@jtekt.eu (Romanian territory)
✉ mariabianca.predut@jtekt.eu (Israeli & Greek territory)

JTEKT Sales Deutschland GmbH
Territory: Germany, Austria, Switzerland, Denmark, Turkey, Poland, Ukraine,
Bulgaria, Czech Republic, Hungary, Serbia & Montenegro, Croatia, Slovakia,
Slovenia, Bosnia & Herzegovina, Latvia, Estonia, Lithuania and Macedonia
Bargkoppelweg 4
22145 Hamburg, Germany
☎ +49 (0)40 679 0900
✉ info-eu@jtekt.eu

JTEKT Sales France S.A.
Territory: France, Algeria, Morocco & Tunisia
Working address: 55 Avenue de Colmar
92500 Rueil-Malmaison, France
☎ +33 (0)14 139 8000
✉ info-eu@jtekt.eu

JTEKT Europe Bearings B.V. – Iberian Branch Office
Territory: Spain & Portugal
Avenida de la industria 52
28823 Coslada (Madrid), Spain
☎ +34 (0)91 329 0818
✉ info-eu@jtekt.eu

JTEKT Poland Branch Office
3. Maja 14
41-200 Sosnowiec, Poland
☎ +48 (0)32 746 7777
✉ info-eu@jtekt.eu

